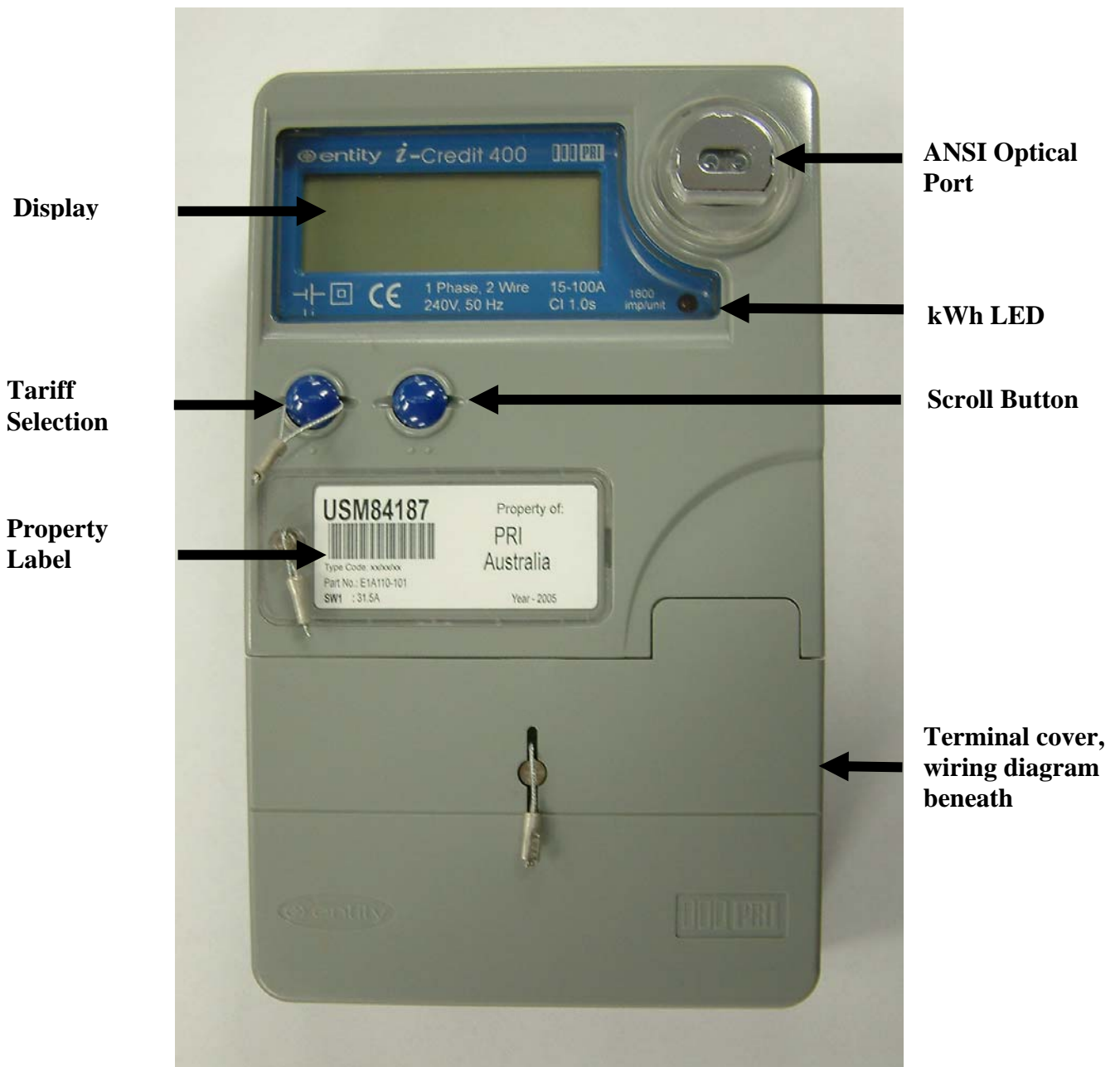


Powercor Cogen Meter Code 308/5, ICM400 PRI.



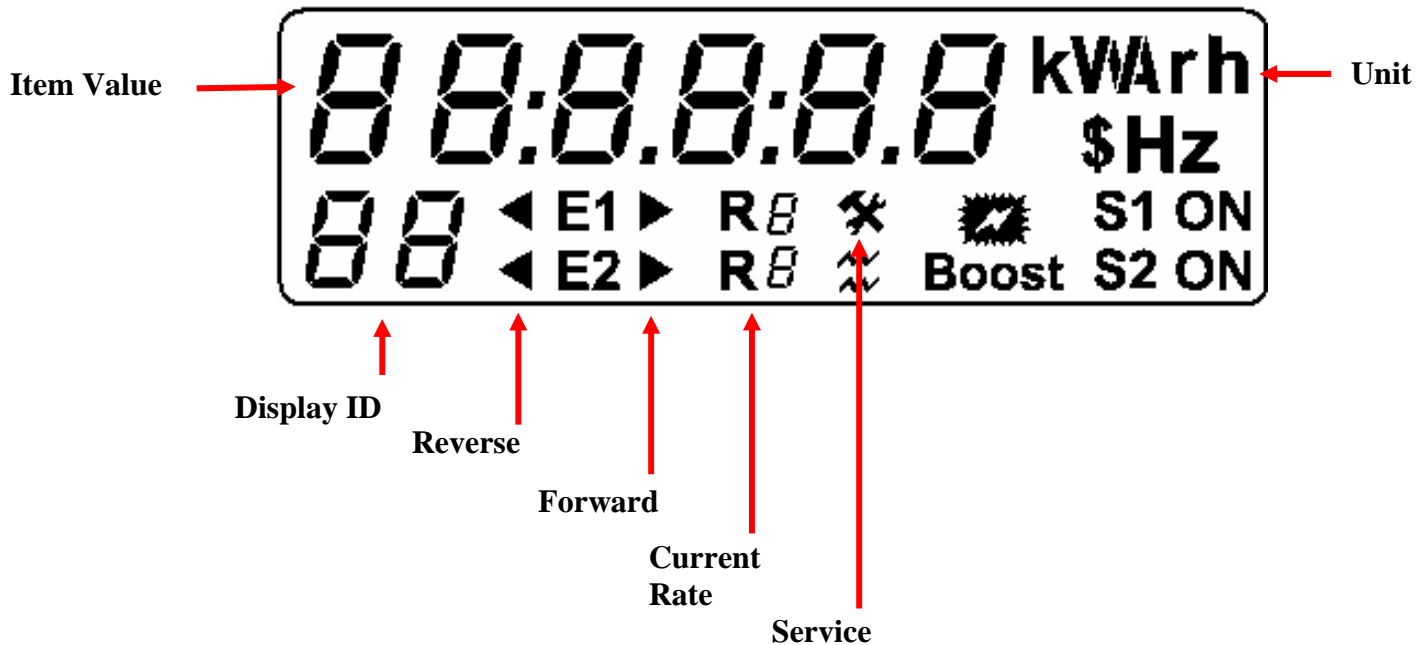
Please Note:

Interval (Type 5 Manually Read Interval) Meters are probe read by the meter readers.
Register Reads may not necessarily correlate with the readings on a customer's electricity bill.

Customer's querying consumption figures, should read the kWh (004 & 006) registers (add them together) at the beginning and end of a billing cycle. Subtracting the beginning read from the end read will calculate their usage. This figure should marry up with the total usage provided by their retailer.

Reading the display

The display (LCD), shown below, contains a number of individually controllable items: Display ID and Value, Annunciators and Indicators. The annunciators identify the *display options* (data item and meter program information) and the indicators show status information.



Reading the display options

The meter uses the following items to show the display options:

- **Display ID** — a two-digit number that identifies the display option. Note that the display options need not be scrolled in order of their display IDs.
- **Item Value** — the value of the display item, such as the number of kWh consumed during the current billing period.

Reading the status information

The meter uses the following items to show status information:

- **kWh LED** — located bottom right of the meter's display and flash at a rate proportional to the energy consumption. LED indicators flash at a rate of 1.6 Wh/pulse.
- **Rate indicator** — used to identify rate-specific display information for each element.

ITEM	DESCRIPTION
88	TEST DISPLAY
01	TIME
02	DATE
04	PEAK kWh Import
06	OFF PEAK kWh Import
07	HOT WATER kWh
94	PEAK kWh Export
96	OFF PEAK kWh Export
08	STATUS
18	PROPERTY No
30	TARIFF
33	SWITCH TIMES